

PROFESSIONAL TOOLS



PROFESSIONAL TOOLS



Add: No.52, South Xiayi Road ,Yongkang,Zhejiang, PR China
E-mail: manager@umchinatools.com
QQ: 3547205816
Skype: 373567626@qq.com
Tel/Fax: + 86 579 8722 6093
Mob/Wechat/Whatsapp: + 86 133 3592 3648
www.umchinatools.com



Yongkang United Mechanic Co.,Ltd("UM") is specialized in manufacturing and marketing of outdoor garden tools, like gasoline chainsaw, electric chainsaw, brush cutter, hedge trimmer, multi tool, earth auger, water pump and parts etc.

UM is located in Yongkang city, Zhejiang province. Thanks to regional and industrial advantages in this China's Hardware Capital, UM has been able to offer clients good quality, fashion model and competitive prices all these years. Most products are CE, GS, EUII certified. Besides UM has the widest range of spare parts and accessories.

UM controls products quality starting from the choice of spare parts. Quality is controlled by over 7 steps, from spare parts inspection, assembling inspection, 100% engine test, sample test of finished products, package inspection, sample test after package, outdoor test etc. Thus UM offers the most competitive products to meet every client's needs and enjoy good reputation among old and new customers.

Starting in year 2010, UM is famous in domestic market first and then focuses on international market. Our years experience on domestic market and company location leads our products to semi-professional and professional quality level. Main markets are Latin America, Europe, Southeast Asia, Australia etc.

Welcome to UM! We are willing to share bright future with you.

Welcome to UM!
www.umchinatools.com

CONTENT

01-06

Chainsaw Series

07-10

Electric Chainsaw Series

11-25

Brush Cutter Series

26-28

Tiller Weeder Series

29-30

Multi Tool Series

31-34

Earth Auger Series

35-36

Water Pump Series

37-38

Hedge Trimmer Series

39-42

Chainsaw Spare Parts Series

43-48

Brush Cutter Spare Parts Series





COMMON FEATURES

- It is an integration of technology and high-end materials that satisfy your increasing demand and we are will insist on innovation to improve your work efficiency.
- Unparalleled power is applicable to high intensity operation.

UM-CS5800

Intertek GS CE ENEC EURO-II (EURO-I)

CAPACITY:

Displacement:	58cc
Rated power:	2,4kw/7000rpm
Bar length:	18"/20"/22"
Chain pitch:	0.325" or 3/8
Idle speed:	3000rpm± 200
Fuel tank capacity:	550ml
Oil tank capacity:	260ml
G.W./N.W.:	8/7 kgs



UM-CS2500

CAPACITY:

Displacement:	25,4cc
Rated power:	0,9kw/7000rpm
Bar length:	10"/12"
Chain pitch:	3/8"
Idle speed:	3300rpm± 200
Fuel tank capacity:	230ml
Oil tank capacity:	160ml
G.W./N.W.:	4.5/3.5 kgs

Intertek GS CE ENEC EURO-II (EURO-I)

UM-CS3800A

CAPACITY:

Displacement:	37,2cc
Rated power:	1,3kw/7000rpm
Bar length:	16"
Chain pitch:	3/8"
Idle speed:	3000rpm± 200
Fuel tank capacity:	310ml
Oil tank capacity:	210ml
G.W./N.W.:	6.5/5.55 kgs

Intertek GS CE ENEC EURO-II (EURO-I)

UM-CS3800B

CAPACITY:

Displacement:	37.2cc
Rated power:	1,3kw/7000rpm
Bar length:	16"
Chain pitch:	3/8"
Idle speed:	3000rpm± 200
Fuel tank capacity:	310ml
Oil tank capacity:	210ml
G.W./N.W.:	6.5/5.55 kgs

Intertek GS CE ENEC EURO-II (EURO-I)



UM-CS5200A

CAPACITY:

Displacement:	52cc
Rated power:	2,2kw/7000rpm
Bar length:	16"/18"/20"
Chain pitch:	0.325" or 3/8
Idle speed:	3000rpm± 200
Fuel tank capacity:	550ml
Oil tank capacity:	260ml
G.W./N.W.:	7.8/6.8 kgs

Intertek   EURO-II (EURO-I)



UM-CS5200B

CAPACITY:

Displacement:	52cc
Rated power:	2,2kw/7000rpm
Bar length:	16"/18"/20"
Chain pitch:	0.325" or 3/8
Idle speed:	3000rpm± 200
Fuel tank capacity:	550ml
Oil tank capacity:	260ml
G.W./N.W.:	7.8/6.8 kgs

Intertek   EURO-II (EURO-I)



UM-CS5800A

CAPACITY:

Displacement:	58cc
Rated power:	2,4kw/7000rpm
Bar length:	18"/20"/22"
Chain pitch:	0.325" or 3/8
Idle speed:	3000rpm± 200
Fuel tank capacity:	550ml
Oil tank capacity:	260ml
G.W./N.W.:	8/7 kgs

Intertek   EURO-II (EURO-I)



UM-CS4500A

CAPACITY:

Displacement:	45cc
Rated power:	1,7kw/7000rpm
Bar length:	16"/18"/20"
Chain pitch:	0.325" or 3/8
Idle speed:	3000rpm± 200
Fuel tank capacity:	550ml
Oil tank capacity:	260ml
G.W./N.W.:	7.6/6.6 kgs

Intertek   EURO-II (EURO-I)



UM-CS4500B

CAPACITY:

Displacement:	45cc
Rated power:	1,7kw/7000rpm
Bar length:	16"/18"/20"
Chain pitch:	0.325" or 3/8
Idle speed:	3000rpm± 200
Fuel tank capacity:	550ml
Oil tank capacity:	260ml
G.W./N.W.:	7.6/6.6 kgs

Intertek   EURO-II (EURO-I)



UM-CS5800B

CAPACITY:

Displacement:	58cc
Rated power:	2,4kw/7000rpm
Bar length:	18"/20"/22"
Chain pitch:	0.325" or 3/8
Idle speed:	3000rpm± 200
Fuel tank capacity:	550ml
Oil tank capacity:	260ml
G.W./N.W.:	8/7 kgs

Intertek GS CE ENEC EURO-II (EURO-I)



UM-CS5800C

CAPACITY:

Displacement:	58cc
Rated power:	2,4kw/7000rpm
Bar length:	18"/20"/22"
Chain pitch:	0.325" or 3/8
Idle speed:	3000rpm± 200
Fuel tank capacity:	550ml
Oil tank capacity:	260ml
G.W./N.W.:	8/7 kgs

Intertek GS CE ENEC EURO-II (EURO-I)



UM-CS5800D

CAPACITY:

Displacement:	58cc
Rated power:	2,4kw/7000rpm
Bar length:	18"/20"/22"
Chain pitch:	0.325" or 3/8
Idle speed:	3000rpm± 200
Fuel tank capacity:	550ml
Oil tank capacity:	260ml
G.W./N.W.:	8/7 kgs

Intertek GS CE ENEC EURO-II (EURO-I)



UM-CS5800E

CAPACITY:

Displacement:	58cc
Rated power:	2,4kw/7000rpm
Bar length:	18"/20"/22"
Chain pitch:	0.325" or 3/8
Idle speed:	3000rpm± 200
Fuel tank capacity:	550ml
Oil tank capacity:	260ml
G.W./N.W.:	8/7 kgs

Intertek GS CE ENEC EURO-II (EURO-I)



UM-CS6150

CAPACITY:

Displacement:	61.5cc
Rated power:	3,0kw/8500rpm
Bar length:	18"/20"/22"
Chain pitch:	0.325" or 3/8
Idle speed:	3000rpm± 200
Fuel tank capacity:	550ml
Oil tank capacity:	260ml
G.W./N.W.:	8.0/7.0 kgs

Intertek GS CE ENEC EURO-II (EURO-I)



UM-CS6200

CAPACITY:

Displacement:	62cc
Rated power:	3,2kw/8500rpm
Bar length:	22"/24"
Chain pitch:	3/8
Idle speed:	3000rpm± 200
Fuel tank capacity:	680ml
Oil tank capacity:	360ml
G.W./N.W.:	8.5/7.5 kgs

Intertek GS CE ENEC EURO-II (EURO-I)





 EURO-II (EURO-I)



UM-EC405-3



UM-EC8

UM-EC405-3

CAPACITY:

Rated Voltage:	110V/127V/220V
Rated Frequency:	50Hz/60Hz
Rated Input Power:	1400W/1600W/1800W
Bar length:	350mm/400mm
Power source:	electricity
Tool free chain adjustment:	yes
Automatic oil lubrication:	yes
Engine material:	40H big power copper

UM-EC8

Rated Voltage:	110V/127V/220V
Rated Frequency:	50Hz/60Hz
Rated Input Power:	1600W/1800W/2000W
Bar length:	350mm/400mm
Power source:	electricity
Tool free chain adjustment:	yes
Automatic oil lubrication:	yes
Engine material:	40H big power copper





 EURO-II (EURO-I)



UM-EC5-2

CAPACITY:

Rated Voltage:	110V/127V/220V
Rated Frequency:	50Hz/60Hz
Rated Input Power:	1600W/1800W/2000W/2200W
Bar length:	350mm/400mm
Power source:	electricity
Tool free chain adjustment:	yes
Automatic oil lubrication:	yes
Engine material:	50H big power copper





 EURO-II (EURO-I)



UM-EC3

CAPACITY:

Rated Voltage:	110V/127V/220V
Rated Frequency:	50Hz/60Hz
Rated Input Power:	1600W/1800W/2000W
Bar length:	350mm/400mm
Power source:	electricity
Tool free chain adjustment:	yes
Automatic oil lubrication:	yes
Engine material:	40H big power copper





 EURO-II (EURO-I)



UM-EC9

CAPACITY:

Rated Voltage:	110V/127V/220V
Rated Frequency:	50Hz/60Hz
Rated Input Power:	1600W/1800W/2000W/2200W/2400W
Bar length:	350mm/400mm
Power source:	electricity
Tool free chain adjustment:	yes
Automatic oil lubrication:	yes
Engine material:	50H big power copper




 EURO-II (EURO-I)



UM-EC5016

CAPACITY:

Rated Voltage:	110V/127V/220V
Rated Frequency:	50Hz/60Hz
Rated Input Power:	1400W/1600W/ 1800W
Bar length:	350mm/400mm
Power source:	electricity
Tool free chain adjustment:	no
Automatic oil lubrication:	yes
Engine material:	35H big power copper




 EURO-II (EURO-I)



UM-EC5616

CAPACITY:

Rated Voltage:	110V/127V/220V
Rated Frequency:	50Hz/60Hz
Rated Input Power:	1600W/1800W/ 2000W
Bar length:	350mm/400mm
Power source:	electricity
Tool free chain adjustment:	yes
Automatic oil lubrication:	yes
Engine material:	40H big power copper




 EURO-II (EURO-I)



UM-EC5619

CAPACITY:

Rated Voltage:	110V/127V/220V
Rated Frequency:	50Hz/60Hz
Rated Input Power:	1600W/1800W/ 2000W
Bar length:	350mm/400mm
Power source:	electricity
Tool free chain adjustment:	yes
Automatic oil lubrication:	yes
Engine material:	40H big power copper




 EURO-II (EURO-I)

- The wood chips released from side, so the chips can not fly to user body. Motor will not inhale wood chips so machine will not get burned.
- Lightweight design, more easy to control. New design motor, bigger torque, faster speed, cutting is more efficient.
- 65Mn belt brake, reliable and durable, to avoid torsional spring failure
- New free tools tensions system, one knob to adjust chain tension, structure is more simple and reliable.
- Big and small gear made of power metallurgy, extend working life of the machine, avoid gear shaving or break problem.
- Side gear and worm rod is nylon 66. FFU test by over 60 hours, pump function is good.



UM-EC6103

CAPACITY:

Rated Voltage:	110V/127V/220V
Rated Frequency:	50Hz/60Hz
Rated Input Power:	1600W/1800W/ 2000W/2200W/ 2400W
Bar length:	350mm/400mm
Power source:	electricity
Tool free chain adjustment:	no
Automatic oil lubrication:	yes
Engine material:	40H big power copper
Safety brake:	yes






 EURO-II (EURO-I)

- The wood chips released from side, so the chips can not fly to user body. Motor will not inhale wood chips so machine will not get burned.
- Lightweight design, more easy to control. New design motor, bigger torque, faster speed, cutting is more efficient.
- 65Mn belt brake, reliable and durable, to avoid torsional spring failure
- New free tools tensions system, one knob to adjust chain tension, structure is more simple and reliable.
- Big and small gear made of power metallurgy, extend working life of the machine, avoid gear shaving or break problem.
- Side gear and worm rod is nylon 66. FFU test by over 60 hours, pump function is good.



UM-EC6107

CAPACITY:

Rated Voltage:	110V/127V/220V
Rated Frequency:	50Hz/60Hz
Rated Input Power:	1600W/1800W/ 2000W/2200W/ 2400W
Bar length:	350mm/400mm
Power source:	electricity
Tool free chain adjustment:	no
Automatic oil lubrication:	yes
Engine material:	40H big power copper
Safety brake:	yes





UM-BC260A





 EURO-II (EURO-I)

CAPACITY:

Engine model:	1E34F
Engine type:	1-cylinder, 2-stroke, air cooled
Displacement:	25.4cc
Rated power:	0,7kw/7500rpm
Carburetor:	Diaphragm type
Idle speed:	3000rpm± 200
Fuel tank capacity:	600ml
Ignition system:	C.D.I



















UM-BC260B

CAPACITY:

Engine model:	1E34F
Engine type:	1-cylinder, 2-stroke air cooled
Displacement:	25.4cc
Rated power:	0,7kw/7500rpm
Carburetor:	Diaphragm type
Idle speed:	3000rpm± 200
Fuel tank capacity:	600ml
Ignition system:	C.D.I





 EURO-II (EURO-I)

UM-BC260C

CAPACITY:

Engine model:	1E34F
Engine type:	1-cylinder, 2-stroke air cooled
Displacement:	25.4cc
Rated power:	0,7kw/7500rpm
Carburetor:	Diaphragm type
Idle speed:	3000rpm± 200
Fuel tank capacity:	600ml
Ignition system:	C.D.I





 EURO-II (EURO-I)

UM-BC328

CAPACITY:

Engine model:	1E36F
Engine type:	1-cylinder, 2-stroke air cooled
Displacement:	32.8cc
Rated power:	0,85kw/7500rpm
Carburetor:	Float type
Idle speed:	3000rpm± 200
Fuel tank capacity:	850ml
Ignition system:	C.D.I





 EURO-II (EURO-I)



UM-BC330A

CAPACITY:

Engine model:	1E36F-2
Engine type:	1-cylinder, 2-stroke air cooled
Displacement:	30.5cc
Rated power:	0,9kw/7500rpm
Carburetor:	Diaphragm type
Idle speed:	3000rpm± 200
Fuel tank capacity:	850ml

Intertek GS CE ENX EURO-II (EURO-I)



UM-BC330B

CAPACITY:

Engine model:	1E36F-2
Engine type:	1-cylinder, 2-stroke air cooled
Displacement:	30.5cc
Rated power:	0,9kw/7500rpm
Carburetor:	Diaphragm type
Idle speed:	3000rpm± 200
Fuel tank capacity:	850ml

Intertek GS CE ENX EURO-II (EURO-I)



UM-BC330C

CAPACITY:

Engine model:	1E36F-2
Engine type:	1-cylinder, 2-stroke air cooled
Displacement:	30.5cc
Rated power:	0,9kw/7500rpm
Carburetor:	Diaphragm type
Idle speed:	3000rpm± 200
Fuel tank capacity:	850ml

Intertek GS CE ENX EURO-II (EURO-I)



- The starting handle is ergonomically designed to ensure that the engine starts smoothly, does not rebound, and effectively reduces the required tension and makes it easier and comfortable to use.
- The engine is equipped with a very effective shock absorber that absorbs vibrations.
- The collocation for industrial gear professional development of the alloy saw blade, blade and a variety of optional head, meet the needs of your work



UM-BC411(MARKITA)

CAPACITY:

Engine model:	1E40F-6
Engine type:	1-cylinder, 2-stroke air cooled
Displacement:	40.2cc
Rated power:	1,45kw/7500rpm
Carburetor:	Float type
Idle speed:	3000rpm± 200
Fuel tank capacity:	1200ml
Ignition system:	C.D.I



Intertek GS CE ENX EURO-II (EURO-I)



- The starting handle is ergonomically designed to ensure that the engine starts smoothly, does not rebound, and effectively reduces the required tension and makes it easier and comfortable to use.
- The engine is equipped with a very effective shock absorber that absorbs vibrations.
- The collocation for industrial gear professional development of the alloy saw blade, blade and a variety of optional head, meet the needs of your work



UM-BC411(ROBIN)

CAPACITY:

Engine model:	1E40F-6
Engine type:	1-cylinder, 2-stroke air cooled
Displacement:	40.2cc
Rated power:	1,45kw/7500rpm
Carburetor:	Float type
Idle speed:	3000rpm± 200
Fuel tank capacity:	1200ml
Ignition system:	C.D.I



Intertek GS CE ENX EURO-II (EURO-I)



- The starting handle is ergonomically designed to ensure that the engine starts smoothly, does not rebound, and effectively reduces the required tension and makes it easier and comfortable to use.
- The engine is equipped with a very effective shock absorber that absorbs vibrations.
- The collocation for industrial gear professional development of the alloy saw blade, blade and a variety of optional head, meet the needs of your work



UM-BC430A

CAPACITY:

Engine model:	1E40F-5
Engine type:	1-cylinder, 2-stroke air cooled
Displacement:	42.7cc
Rated power:	1,47kw/7500rpm
Carburetor:	Diaphragm type
Idle speed:	3000rpm± 200
Fuel tank capacity:	1200ml
Ignition system:	C.D.I



Intertek GS CE ENEC EURO-II (EURO-I)



UM-BC430B

CAPACITY:

Engine model:	1E40F-5
Engine type:	1-cylinder, 2-stroke air cooled
Displacement:	42.7cc
Rated power:	1,47kw/7500rpm
Carburetor:	Diaphragm type
Idle speed:	3000rpm± 200
Fuel tank capacity:	1200ml
Ignition system:	C.D.I

Intertek GS CE ENEC EURO-II (EURO-I)



UM-BC430C

CAPACITY:

Engine model:	1E40F-5
Engine type:	1-cylinder, 2-stroke air cooled
Displacement:	42.7cc
Rated power:	1,47kw/7500rpm
Carburetor:	Diaphragm type
Idle speed:	3000rpm± 200
Fuel tank capacity:	1200ml
Ignition system:	C.D.I

Intertek GS CE ENEC EURO-II (EURO-I)



UM-BC430D

CAPACITY:

Engine model:	1E40F-5
Engine type:	1-cylinder, 2-stroke air cooled
Displacement:	42.7cc
Rated power:	1,47kw/7500rpm
Carburetor:	Diaphragm type
Idle speed:	3000rpm± 200
Fuel tank capacity:	1200ml
Ignition system:	C.D.I

Intertek GS CE ENEC EURO-II (EURO-I)



- The starting handle is ergonomically designed to ensure that the engine starts smoothly, does not rebound, and effectively reduces the required tension and makes it easier and comfortable to use.
- The engine is equipped with a very effective shock absorber that absorbs vibrations.
- The collocation for industrial gear professional development of the alloy saw blade, blade and a variety of optional head, meet the needs of your work



UM-BC520A

CAPACITY:

Engine model:	1E44F-5
Engine type:	1-cylinder, 2-stroke air cooled
Displacement:	52cc
Rated power:	2,2kw/7500rpm
Carburetor:	Diaphragm type
Idle speed:	3000rpm± 200
Fuel tank capacity:	1200ml
Ignition system:	C.D.I



Intertek GS CE ENEC EURO-II (EURO-I)



UM-BC520B

CAPACITY:

Engine model:	1E44F-5
Engine type:	1-cylinder, 2-stroke air cooled
Displacement:	52cc
Rated power:	2,2kw/7500rpm
Carburetor:	Diaphragm type
Idle speed:	3000rpm± 200
Fuel tank capacity:	1200ml
Ignition system:	C.D.I

Intertek GS CE ENEC EURO-II (EURO-I)



UM-BC520C

CAPACITY:

Engine model:	1E44F-5
Engine type:	1-cylinder, 2-stroke air cooled
Displacement:	52cc
Rated power:	2,2kw/7500rpm
Carburetor:	Diaphragm type
Idle speed:	3000rpm± 200
Fuel tank capacity:	1200ml
Ignition system:	C.D.I

Intertek GS CE ENEC EURO-II (EURO-I)



UM-BC520D

CAPACITY:

Engine model:	1E44F-5
Engine type:	1-cylinder, 2-stroke air cooled
Displacement:	52cc
Rated power:	2,2kw/7500rpm
Carburetor:	Diaphragm type
Idle speed:	3000rpm± 200
Fuel tank capacity:	1200ml
Ignition system:	C.D.I

Intertek GS CE ENEC EURO-II (EURO-I)



- The starting handle is ergonomically designed to ensure that the engine starts smoothly, does not rebound, and effectively reduces the required tension and makes it easier and comfortable to use.
- The engine is equipped with a very effective shock absorber that absorbs vibrations.
- The collocation for industrial gear professional development of the alloy saw blade, blade and a variety of optional head, meet the needs of your work



UM-BC620

CAPACITY:

Engine model:	1E48F
Engine type:	1-cylinder, 2-stroke air cooled
Displacement:	62cc
Rated power:	2,4kw/7500rpm
Carburetor:	Diaphragm type
Idle speed:	3000rpm± 200
Fuel tank capacity:	1200ml
Ignition system:	C.D.I



Intertek GS CE EMC EURO-II (EURO-I)



- The starting handle is ergonomically designed to ensure that the engine starts smoothly, does not rebound, and effectively reduces the required tension and makes it easier and comfortable to use.
- The engine is equipped with a very effective shock absorber that absorbs vibrations.
- The collocation for industrial gear professional development of the alloy saw blade, blade and a variety of optional head, meet the needs of your work



UM-BC139

CAPACITY:

Engine model:	1E139F
Engine type:	1-cylinder, 4-stroke air cooled
Displacement:	31cc
Rated power:	0,7kw/7500rpm
Carburetor:	Diaphragm type
Idle speed:	3000rpm± 200
Fuel tank capacity:	1200ml
Ignition system:	C.D.I



Intertek GS CE EMC EURO-II (EURO-I)



- The starting handle is ergonomically designed to ensure that the engine starts smoothly, does not rebound, and effectively reduces the required tension and makes it easier and comfortable to use.
- The engine is equipped with a very effective shock absorber that absorbs vibrations.
- The collocation for industrial gear professional development of the alloy saw blade, blade and a variety of optional head, meet the needs of your work



UM-T200

CAPACITY:

Engine model:	1E39F
Engine type:	1-cylinder, 2-stroke air cooled
Displacement:	39cc
Rated power:	1,25kw/7500rpm
Carburetor:	Float type
Idle speed:	3000rpm± 200
Fuel tank capacity:	1000ml
Ignition system:	C.D.I



Intertek GS CE EMC EURO-II (EURO-I)



- The starting handle is ergonomically designed to ensure that the engine starts smoothly, does not rebound, and effectively reduces the required tension and makes it easier and comfortable to use.
- The engine is equipped with a very effective shock absorber that absorbs vibrations.
- The collocation for industrial gear professional development of the alloy saw blade, blade and a variety of optional head, meet the needs of your work



UM-BC140

CAPACITY:

Engine model:	1E140F
Engine type:	1-cylinder, 4-stroke, air cooled
Displacement:	35.8cc
Rated power:	1,2kw/7500rpm
Carburetor:	Diaphragm type
Idle speed:	3000rpm± 200
Fuel tank capacity:	1000ml
Ignition system:	C.D.I



Intertek GS CE EMC EURO-II (EURO-I)



UM-BP328

CAPACITY:	
Engine model:	1E36F
Engine type:	1-cylinder, 2-stroke air cooled
Displacement:	32.8cc
Rated power:	0,85kw/7500rpm
Carburetor:	Float type
Idle speed:	3000rpm± 200
Fuel tank capacity:	850ml
Ignition system:	C.D.I

Intertek   EURO-II (EURO-I)



UM-BP430A

CAPACITY:	
Engine model:	1E40F-5
Engine type:	1-cylinder, 2-stroke air cooled
Displacement:	42.7cc
Rated power:	1,47kw/7500rpm
Carburetor:	Diaphragm type
Idle speed:	3000rpm± 200
Fuel tank capacity:	1200ml
Ignition system:	C.D.I

Intertek   EURO-II (EURO-I)



UM-BP140

CAPACITY:	
Engine model:	1E140F
Engine type:	1-cylinder, 4-stroke, air cooled
Displacement:	35.8cc
Rated power:	1,2kw/7500rpm
Carburetor:	Diaphragm type
Idle speed:	3000rpm± 200
Fuel tank capacity:	1000ml
Ignition system:	C.D.I

Intertek   EURO-II (EURO-I)



UM-BP430B

CAPACITY:	
Engine model:	1E40F-5
Engine type:	1-cylinder, 2-stroke air cooled
Displacement:	42.7cc
Rated power:	1,47kw/7500rpm
Carburetor:	Diaphragm type
Idle speed:	3000rpm± 200
Fuel tank capacity:	1200ml
Ignition system:	C.D.I



- The starting handle is ergonomically designed to ensure that the engine starts smoothly, does not rebound, and effectively reduces the required tension and makes it easier and comfortable to use.
- The engine is equipped with a very effective shock absorber that absorbs vibrations.
- The collocation for industrial gear professional development of the alloy saw blade, blade and a variety of optional head, meet the needs of your work



UM-BP520A

CAPACITY:

Engine model:	1E44F-5
Engine type:	1-cylinder, 2-stroke air cooled
Displacement:	52cc
Rated power:	2,2kw/7500rpm
Carburetor:	Diaphragm type
Idle speed:	3000rpm± 200
Fuel tank capacity:	1200ml
Ignition system:	C.D.I



Intermark GS CE ENEC EURO-II (EURO-I)



- The starting handle is ergonomically designed to ensure that the engine starts smoothly, does not rebound, and effectively reduces the required tension and makes it easier and comfortable to use.
- The engine is equipped with a very effective shock absorber that absorbs vibrations.
- The collocation for industrial gear professional development of the alloy saw blade, blade and a variety of optional head, meet the needs of your work.
- 0.75m,1m,1.5m,extension pole offered,longest length is 6.3 meters long.



UM-PCS260

CAPACITY:

Engine model:	1E34F
Engine type:	1-cylinder, 2-stroke air cooled
Displacement:	25.4cc
Rated power:	0,7kw/7500rpm
Carburetor:	Diaphragm type
Idle speed:	3000rpm± 200
Fuel tank capacity:	600ml
Ignition system:	C.D.I



Intermark GS CE ENEC EURO-II (EURO-I)



- The backpacking machine has high power and acceleration. Damping effect is remarkable and so on.
- Easy to start, front tilt handle design, index finger control throttle greatly improve the user comfort.



UM-BP520B

CAPACITY:

Engine model:	1E44F-5
Engine type:	1-cylinder, 2-stroke air cooled
Displacement:	52cc
Rated power:	2,2kw/7500rpm
Carburetor:	Diaphragm type
Idle speed:	3000rpm± 200
Fuel tank capacity:	1200ml
Ignition system:	C.D.I



Intermark GS CE ENEC EURO-II (EURO-I)



- The starting handle is ergonomically designed to ensure that the engine starts smoothly, does not rebound, and effectively reduces the required tension and makes it easier and comfortable to use.
- The engine is equipped with a very effective shock absorber that absorbs vibrations.
- The collocation for industrial gear professional development of the alloy saw blade, blade and a variety of optional head, meet the needs of your work.



UM-CH260

CAPACITY:

Engine model:	1E34F
Engine type:	1-cylinder, 2-stroke air cooled
Displacement:	25.4cc
Rated power:	0,7kw/7500rpm
Carburetor:	Diaphragm type
Idle speed:	3000rpm± 200
Fuel tank capacity:	600ml
Ignition system:	C.D.I



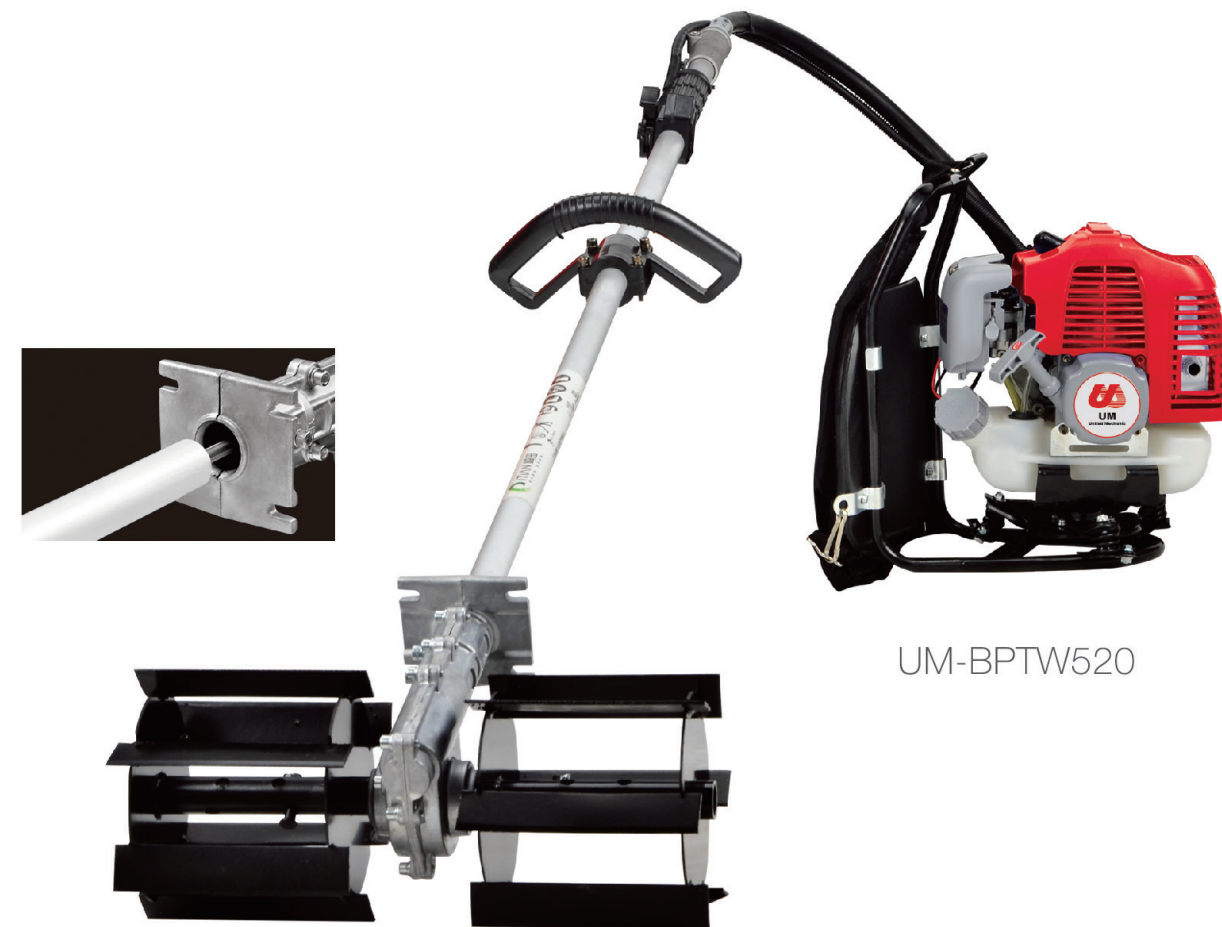
Intermark GS CE ENEC EURO-II (EURO-I)



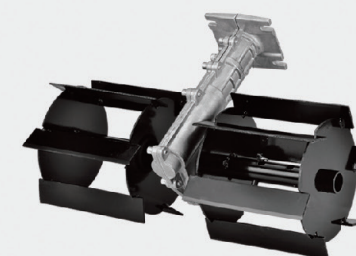
UM-HPBC520A / 520B / 520C

CAPACITY:

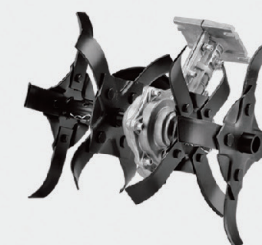
Engine model:	1E44F-5
Engine type:	1-cylinder, 2-stroke,air cooled
Displacement:	52cc
Rated power:	2,2kw/7500rpm
Carburetor:	Diaphragm type
Idle speed:	3000rpm± 200
Fuel tank capacity:	1200ml
Lginition system:	C.D.I



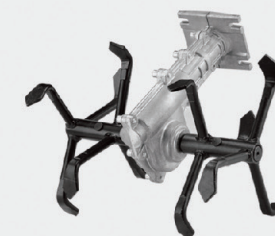
Multi tiller and weeder with various hesds:



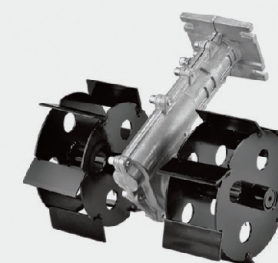
1.15cm straight weeder blade



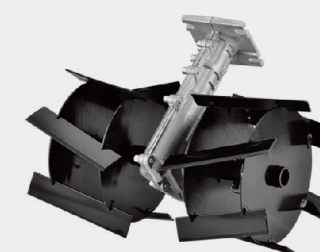
2.Tiller blade



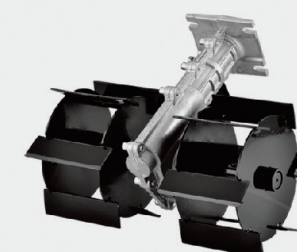
3. Six claw deep plow blade



4. 7cm straight weeder blade



5. 15cm oblique weeder blade



6. 10cm straight weeder blade



UM-BPTW520 / BT520 / HPTW520

CAPACITY:

Engine model:	1E44F-5	1E48F
Engine type:	1-cylinder, 2-stroke,air cooled	1-cylinder, 2-stroke,air cooled
Displacement:	52cc	62cc
Rated power:	2,2kw/7500rpm	2,4kw/7500rpm
Carburetor:	Diaphragm type	Diaphragm type
Idle speed:	3000rpm± 200	3000rpm± 200
Fuel tank capacity:	1200ml	1200ml
Lgnition system:	C.D.I	C.D.I

HPT-620

UM-HPT520A / 520B / HPSP520

CAPACITY:

Engine model:	1E44F-5
Engine type:	1-cylinder, 2-stroke,air cooled
Displacement:	52cc
Rated power:	2,2kw/7500rpm
Carburetor:	Diaphragm type
Idle speed:	3000rpm± 200
Fuel tank capacity:	1200ml
Lgnition system:	C.D.I



Intertek CE ENEC EURO-II (EURO-I)

	UM-MT330	UM-MT430	UM-MT520	UM-MT620
CAPACITY:				
Engine model:	1E36F-2	1E40F-5	1E44F-5	1E48F
Engine type:	1-cylinder, 2-stroke, air cooled	1-cylinder, 2-stroke, air cooled	1-cylinder, 2-stroke, air cooled	1-cylinder, 2-stroke, air cooled
Displacement:	30.5cc	42.7cc	52cc	62cc
Rated power:	0,9kw/7500rpm	1,47kw/7500rpm	2,2kw/7500rpm	2,4kw/7500rpm
Carburetor:	Diaphragm type	Diaphragm type	Diaphragm type	Diaphragm type
Idle speed:	3000rpm± 200	3000rpm± 200	3000rpm± 200	3000rpm± 200
Fuel tank capacity:	850ml	1200ml	1200ml	1200ml
Ignition system:	C.D.I	C.D.I	C.D.I	C.D.I



UM-EA490A

UM-EA490B

UM-EA490C



UM-EA520A

UM-EA520B

UM-EA490A / 490B / 490C

Intermark CE STX EURO-II (EURO-I)

CAPACITY:

Engine model:	1E44F-5
Engine type:	1-cylinder 2-stroke, air cooled
Displacement:	49cc
Rated power:	2,0kw/7500rpm
Carburetor:	Diaphragm type
Idle speed:	3000rpm± 200
Fuel tank capacity:	1200ml
Ignition system:	C.D.I
Driller diameter:	40/60/80/100/150/200/250/300mm
Driller length:	80/100cm
Driller type:	single blade/double blade, normal driller/alloy driller/ice driller

UM-EA520A / 520B

Intermark CE STX EURO-II (EURO-I)

CAPACITY:

Engine model:	1E44F-5
Engine type:	1-cylinder, 2-stroke, air cooled
Displacement:	52cc
Rated power:	2,2kw/7500rpm
Carburetor:	Diaphragm type
Idle speed:	3000rpm± 200
Fuel tank capacity:	1200ml
Ignition system:	C.D.I
Driller diameter:	40/60/80/100/150/200/250/300mm
Driller length:	80/100cm
Driller type:	single blade/double blade, normal driller/alloy driller/ice driller



UM-EA620

CAPACITY:

Engine model:	1E48F
Engine type:	1-cylinder, 2-stroke, air cooled
Displacement:	62cc
Rated power:	2,4kw/7500rpm
Carburetor:	Diaphragm type
Idle speed:	3000rpm± 200
Fuel tank capacity:	1200ml
Ignition system:	C.D.I
Driller diameter:	40/60/80/100/150/200/250/300/350/400mm
Driller length:	80/100cm
Driller type:	single blade/double blade, normal driller/alloy driller/ice driller




EURO-II (EURO-I)



60 80 100 120 150 200 250 300



100 150 150A 200 200 100 60



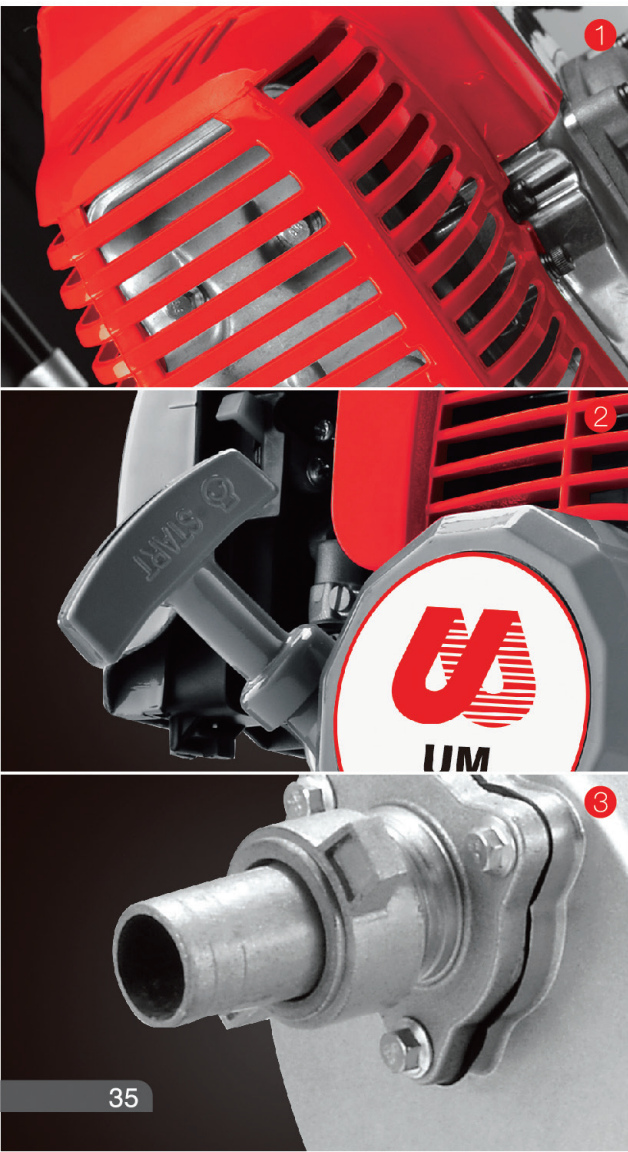
UM-WP520



UM-WP430



UM-WP411



UM-WP520

CAPACITY:

Engine model:	1E44F-5
Engine type:	1-cylinder, 2-stroke, air cooled
Displacement:	52cc
Rated power:	2,2kw/7500rpm
Carburetor:	Diaphragm type
Idle speed:	3000rpm± 200
Fuel tank capacity:	1200ml
Ignition system:	C.D.I

Intertek   **EURO-II (EURO-I)**

Features:

1. High-quality plastic parts, cooling series to upgrade across the board to ensure that high temperature does not soften, while reducing the high temperature flame caused by difficult problems!
2. Visual oil bubble, easy to start, keep abreast of the machine's oil supply system.
3. High-quality choice, to ensure the reliability of the various parts of the machine, so that the machine produces the maximum effect.

UM-WP430

CAPACITY:

Engine model:	1E40F-5
Engine type:	1-cylinder, 2-stroke, air cooled
Displacement:	42,7cc
Rated power:	1,47kw/7500rpm
Carburetor:	Diaphragm type
Idle speed:	3000rpm± 200
Fuel tank capacity:	1200ml
Ignition system:	C.D.I

Intertek   **EURO-II (EURO-I)**

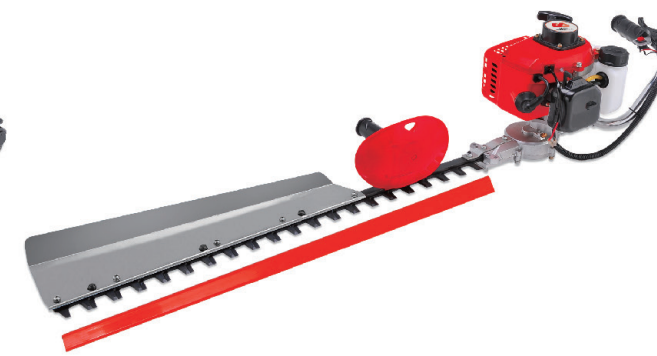
UM-WP411

Engine model:	1E40F-6
Engine type:	1-cylinder, 2-stroke, air cooled
Displacement:	40,2cc
Rated power:	1,45kw/7500rpm
Carburetor:	Float type
Idle speed:	3000rpm± 200
Fuel tank capacity:	1200ml
Ignition system:	C.D.I





UM-HT230A



UM-HT230A-2



UM-HT230B



UM-HT230C

Intertek GS CE ENEC EURO-II (EURO-I)

UM-HT230A / 230A-2 / 230B / 230C / 230B-2

CAPACLTY:

Engine model:	1E32F
Engine type:	1-cylinder, 2-stroke, air cooled
Displacement:	22,5cc
Rated power:	0,65kw/6500rpm
Carburetor:	Diaphragm type
Idle speed:	3000rpm± 200
Fuel tank capacity:	600ml
Ignition system:	C.D.I
Blade type:	single/dual blade
Single blade length:	750mm
Dual blade length:	600mm

UM-HT230B-2

OPERATION IS NOT EASY TO FATIGUE
an ergonomic and rugged design



IMPROVE WORK EFFICIENCY
high performance and lasting power



A NEW GENERATION OF ENGINES
a new generation of engines



UM-CS2500

Displacement:	25,4cc
Rated power:	0,9kw/7000rpm
Bar length:	10"/12"
Chain pitch:	3/8"
Idle speed:	3300rpm± 200
Fuel tank capacity:	230ml
Oil tank capacity:	160ml
G.W./N.W.:	4.5/3.5 kgs



Parts for UM-CS2500





UM-CS4500/5200/5800

Displacement:	52cc
Rated power:	2.2kw/7000rpm
Bar length:	16"/18"/20"
Chain pitch:	0.325" or 3/8
Idle speed:	3000rpm± 200
Fuel tank capacity:	550ml
Oil tank capacity:	260ml
G.W./N.W.:	7.8/6.8 kgs



Parts for UM-CS4500/5200/5800





UM-BC430/520 Brush Cutter

Engine model:	1E40F-5
Engine type:	1-cylinder, 2-stroke air cooled
Displacement:	42.7cc
Rated power:	1,47kw/7500rpm
Carburetor:	Diaphragm type
Idle speed:	3000rpm± 200
Fuel tank capacity:	1200ml
Ignition system:	C.D.I



Parts for UM-BC430/520





UM-BC139 Brush Cutter

Engine model:	1E139F
Engine type:	1-cylinder, 4-stroke air cooled
Displacement:	31cc
Rated power:	0,7kw/7500rpm
Carburetor:	Diaphragm type
Idle speed:	3000rpm± 200
Fuel tank capacity:	1200ml
Ignition system:	C.D.I



Parts for UM-BC139



BC139-01
Crankcase



BC139-02
Crankcase assy



BC139-03
Piston set



BC139-04
Piston Ring



BC139-05
Cylinder cover



BC139-06
Aluminium plate



BC139-07
Crankshaft



BC139-08
Crankshaft Rod Kit



BC139-09
Big Oil Seal



BC139-10
Small Oil Seal



BC139-11
Needle Cage



BC139-12
Muffler



BC139-13
Ignition Coil



BC139-14
Flywheel



BC139-15
Spark Plug



BC139-16
Starter



BC139-17
Starter Wheel



BC139-18
Starter Spring



BC139-19
Starter pulley



BC139-20
Starter Grip



BC139-21
Starter Rope



BC139-22
Tank Housing



BC139-23
Fuel Tank Cap



BC139-24
Fuel Hose



BC139-25
Fuel Filter



BC139-26
Air Filter assy



BC139-27
Shroud(Engine)



BC139-28
Muffler cover



BC139-29
Muffler guard



BC139-30
Wheel gear



BC139-31
Valve



BC139-32
Valve Spring



BC139-33
Valve Spring seat



BC139-34
Arm-Valve(Upper)



BC139-35
Arm-Valve(Lower)



BC139-36
Pin-lift



BC139-37
Wash



BC139-38
Oil Ruler



BC139-39
Fuel baffle



BC139-40
Carburetor



BC139-41
Carburetor
Repair Kit



BC139-42
Intake



BC139-43
Clutch



BC139-44
Clutch spring



BC139-45
Side Cover



BC139-46
Gasket Set



BC139-47
Clutch Housing Assy



BC139-48
Clutch Drum



BC139-49
Pipe with shaft



BC139-50
Aluminum Pipe



BC139-51
Drive Shaft



BC139-52
Rubber Bearing



BC139-53
Fixed seat



BC139-54
Handle Set



BC139-55
Left handle



BC139-56
Right handle



BC139-57
Throttle Cable



BC139-58
Grass Shield



BC139-59
Gear Head



BC139-60
Gear Head Nut



BC139-61
Trimmer head



BC139-62
Wrench



BC139-63
Belt



BC139-64
Metal Blade 3T



UM-BC140 Brush Cutter

Engine model:	1E140F
Engine type:	1-cylinder, 4-stroke, air cooled
Displacement:	35.8cc
Rated power:	1,2kw/7500rpm
Carburetor:	Diaphragm type
Idle speed:	3000rpm± 200
Fuel tank capacity:	1000ml
Ignition system:	C.D.I



Parts for UM-BC140

